

Berkeley City College West Outreach And Match Making Session June 30, 2021



Welcome
Program Overview
Project Overview
SLBE Program
Match Making Breakout Sessions

Agenda

**Welcome
From
PCCD**



Atheria Smith

Interim Vice Chancellor of General Services
Peralta Community College District

Measure G Overview

Keith Kajiya, AECOM

\$800 Million Dollar Bond Measure

2018 Bond Measure passed by 75% voter approval

**Voter Approved Bond
Measure G**



BuildPERALTA

Program Overview

Keith Kajiya, AECOM

\$77 Million
State Funding in Place

\$87.2 Million
Contract
Commitments

\$115 Million
Bonds Issued

13
Major Projects
Underway

Laney College – New Learning Resource Center (*in DSA Review*)



Merritt College – Child Development Center (*in DSA Review*)



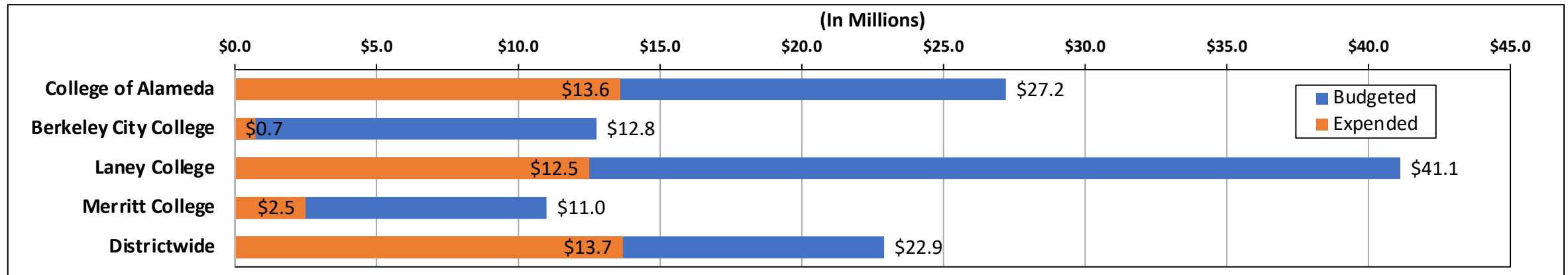
Program Overview

Keith Kajiya, AECOM

¹ Expenditures as of May 31, 2021.

Campus Name	Measure A		Measure G	
	Budget	Expended ¹	Budget	Expended ¹
College of Alameda	\$ 17,168,328	\$ 11,945,088	\$ 10,049,390	\$ 1,702,809
Berkeley City College	\$ 9,542,841	\$ 661,161	\$ 3,210,341	\$ 69,711
Laney College	\$ 32,872,170	\$ 9,078,708	\$ 8,240,085	\$ 3,366,890
Merritt College	\$ 1,275,353	\$ 1,411,095	\$ 9,726,549	\$ 1,126,037
Districtwide	\$ 4,141,308	\$ 3,617,479	\$ 18,773,634	\$ 10,064,312

Total \$115M Allocation \$ 65,000,000 \$ 26,713,532 \$ 50,000,000 \$ 16,329,760



Upcoming Bench Procurements

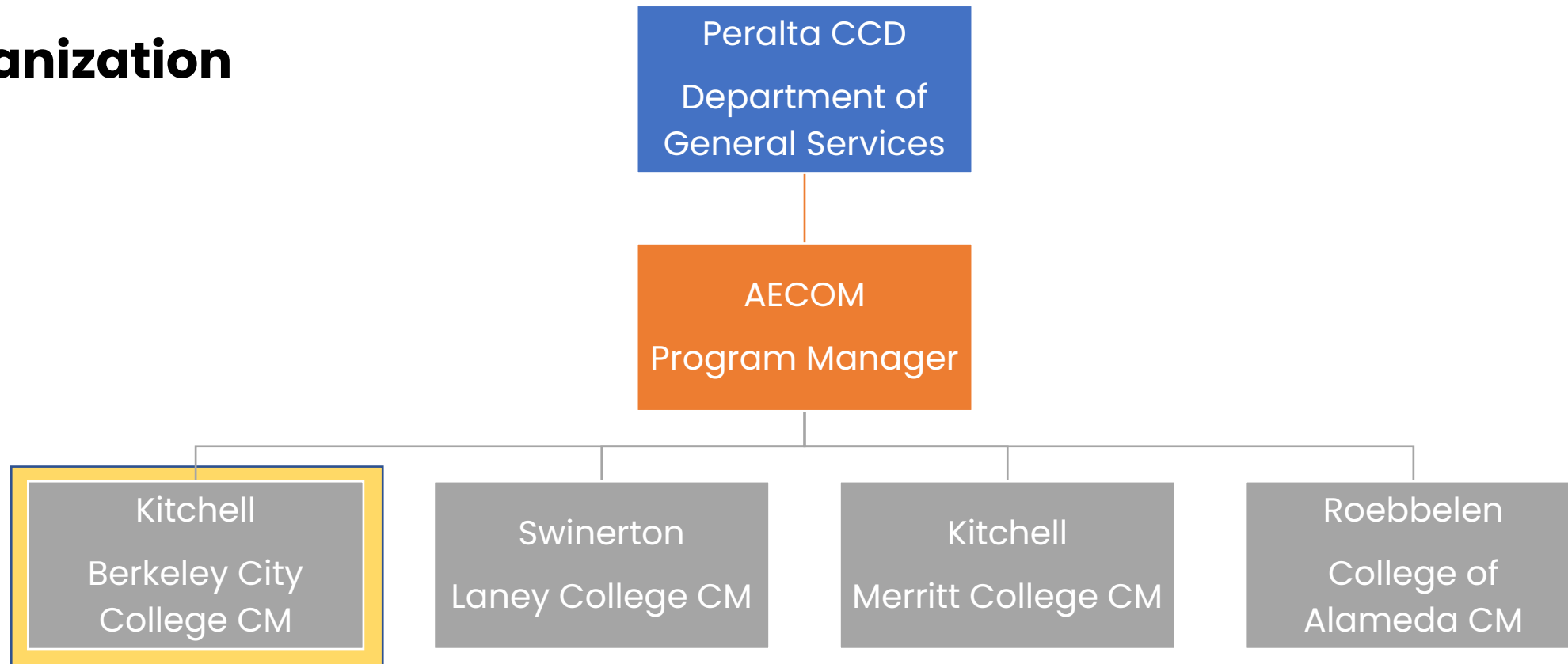
Keith Kajiya, AECOM

Procurement Title	Owner	RFQ Issue
ADA Assessment	PMO	In Process
District-Wide Commissioning Services - RFQ	PMO	In Process
Laney CUP Commissioning	PMO	In Process
Small Construction Management Firms (Small projects as assigned)	PMO	In Process
District-Wide IOR -RFQ	PMO	In Process
COA STEM Architectural & Engineering - RFQ	PMO	Q3 2021
Laney STEM Architectural Services - RFQ	PMO	Q3 2021
Construction Management Firm (Aviation Phase 2)	PMO	Q3 2021
District-Wide HAZMAT/Materials Testing Services - RFQ	PMO	Q4 2021
District-Wide Site Survey Services - RFQ	PMO	Q4 2021
District-Wide Geotech Services - RFQ	PMO	Q4 2021

Program Overview

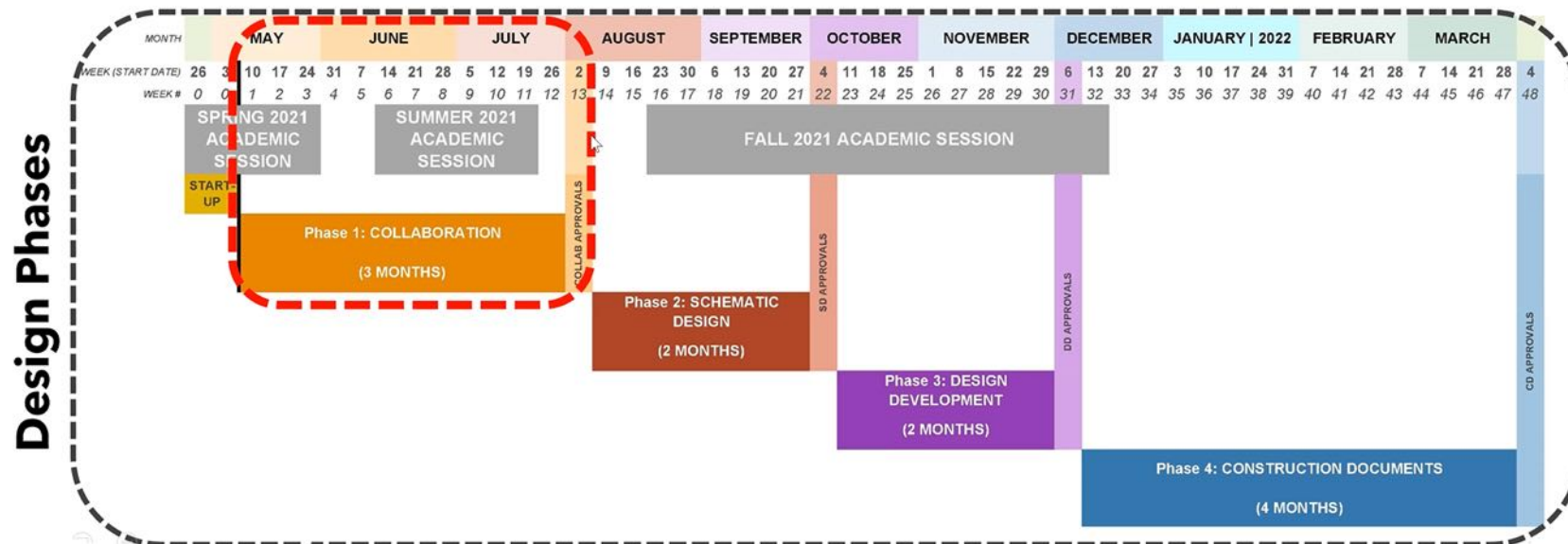
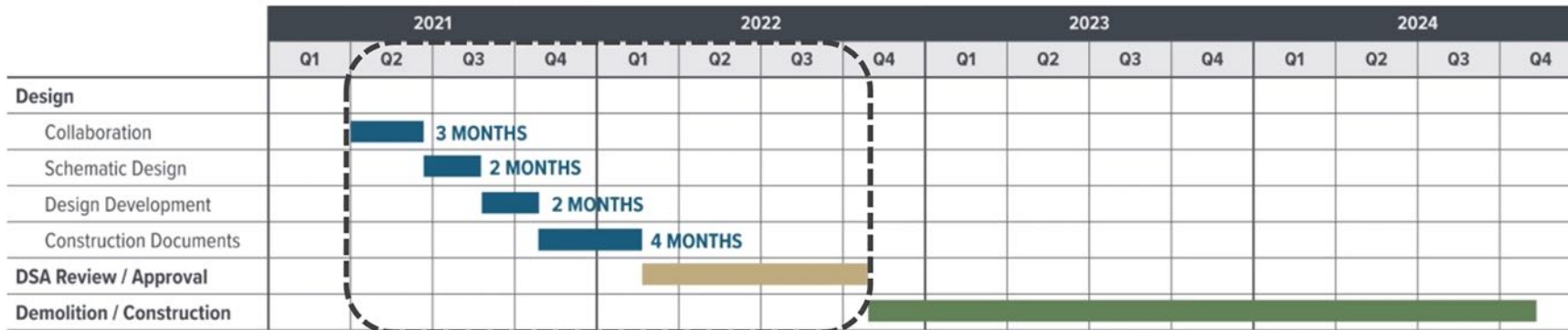
Keith Kajiya, AECOM

Program Management Organization



Project Schedule

Bob Parks, Kitchell



Procurement Schedule

Bob Parks, Kitchell

Early Investigations	Target Date
Utility Surveying/Pothole, Demolition (Design/Permit Documents), Hazardous Material Assessment	Q3 - 2021
Early Packages	Target Date
Abatement and Demolition, Construction Fencing, Scaffolding, Crane, Personnel Hoist, Civil / Grading, Drywall & Framing, Window Washing Equipment, Furniture / FF&E	Q4 - 2021

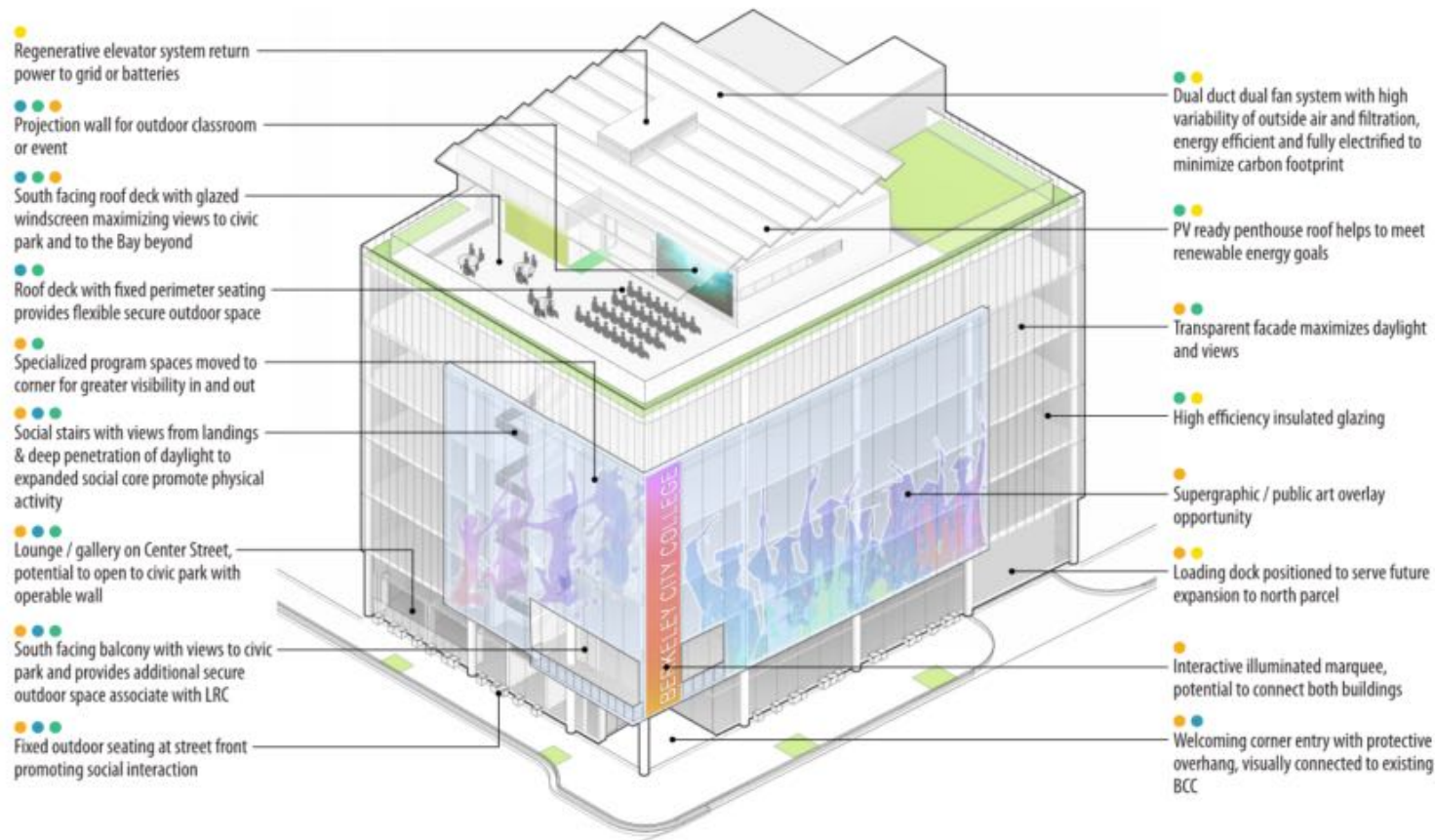
Procurement Schedule

Bob Parks, Kitchell

Core Building System Packages	Target Date
Site Concrete, Structural Concrete, Rebar, Foundations, Waterproofing, Masonry, Metal Stairs, Misc. Steel, Roofing, Sheetmetal, Exterior Signage, Landscaping - Roof	Q1 - 2022
Tenant Improvement Packages	Target Date
Finish Carpentry, Toilet Partitions, Firestopping, Doors / Frames / Hardware, Roll-up Doors, Interior Glass, Tile & Stone, Acoustical Ceilings, Flooring, Epoxy Flooring, Paint, Sealants, Window Treatments, Wayfinding Signage	Q2 - 2022

Conceptual Design

Bob Parks, Kitchell



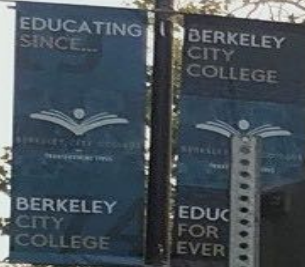
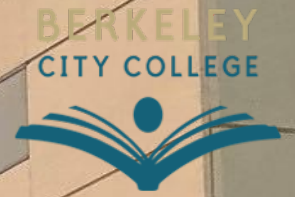
 **Connections**
 **Social Systems**
 **Well-being**
 **Efficiency**

- Student Lounge
- Student Life Center
- Classrooms
- Learning Resource Center
- Anthropology
- Art Studios
- Health and Wellness Center
- Multicultural Resource Center
- UCRC
- HSI
- Faculty Offices
- Administration Offices
- Rooftop Space



Rendering by:

XL Construction + Ratcliff



BERKELEY CITY COLLEGE

Berkeley City College

Rendering by:

XL Construction + Ratcliff



Berkeley City College

Commitment to Local Businesses

Shonda Scott, 360 Total Concept

- 25% Small Local Business Participation
- Certification (small business located in 6 cities in Peralta District: Alameda, Albany, Berkeley, Emeryville, Oakland and Piedmont)
 - SLBE: Revenue size has not exceeded gross annual revenue for the past 3 consecutive years
 - Construction Firms: \$8.5M > under
 - Goods Non-Professional Services Firms \$6M > under
 - A/E and Professional Services \$3M > under
 - SELBE
 - For businesses that have not exceeded revenue of \$1.5M past 3 consecutive years



Match Making Breakouts

During Match Making Sessions: Main Zoom Session will be open with Match Making Appointment Schedule and Breakout Room Instructions.