

# Berkeley City College

**Milvia Project Update**

**October 14, 2021**

# Agenda



- Project Vision
- Bond Spending Plan Overview
- Project Schedule Overview
- Programming Update
- Stacking and Massing Update
- Preliminary Schematic Design Planning
- Next Steps



# Project Vision

## Project Vision Statement

- TO** create a *welcoming center of teaching and learning* which expands the *campus presence* in the heart of downtown
- FOR** BCC students, faculty and staff, and for the *Berkeley community* at large
- THAT** is a new *dynamic hub*, an *inclusive home* and a *gateway* to a vibrant teaching community
- BY** *acknowledging our past* and including the community in our present and future



# Bond Spending Plan



## Bond Spending Plan

Schedule Key	
<span style="color: blue;">■</span>	Contractor or Design Build Entity Procurement
<span style="color: orange;">■</span>	Design
<span style="color: red;">■</span>	DSA Review
<span style="color: green;">■</span>	Construction

	Proj#	Type <sup>1</sup>	3/31/21 Total Project Cost Estimate <sup>2</sup>	Anticipated Funding			2021				2022				2023				2024				2025				2026							
				Measure G	State Match <sup>3</sup>	Measure A (May 2020 Issuance) <sup>4</sup>	Q1	Q2	Q3	Q4	Q1	Q2	Q3	Q4	Q1	Q2	Q3	Q4	Q1	Q2	Q3	Q4	Q1	Q2	Q3	Q4	Q1	Q2	Q3	Q4				
<b>Berkeley City College</b>																																		
2118 Milvia Street (New Building) - DB	2477	New	\$83,851,707	\$75,057,807	\$0	\$8,793,900																												
2050 Center Reconfiguration - DB	2496	Mod	\$31,550,808	\$31,550,808	\$0	\$0																												
Infrastructure	2497	Mod	\$3,000,000	\$3,000,000	\$0	\$0																												
Berkeley ADA Modernization	2323	Mod	\$748,941	\$0	\$0	\$748,941																												
Information Technology	2412	IT	\$2,850,000	\$2,850,000	\$0	\$0																												
<b>Berkeley College Subtotal</b>			<b>\$122,001,456</b>	<b>\$112,458,615</b>	<b>\$0</b>	<b>\$9,542,841</b>																												

<sup>1</sup> Type of Project: New Construction (New); Modernization (Mod); Information Technology (IT); Program-wide (Prog)

<sup>2</sup> Total Project Cost Estimate: Total Capital Costs, including Hard Costs for Construction Building/Interiors and Soft Costs for Development Fees/Consultants. Typical Ratio is 70% Hard to 30% Soft Costs.

<sup>3</sup> FPP - Final Project Proposal: Design Funded in 19/20 and Construction Funded in FY 21/22 - FY 22/23; IPP - Initial Project Proposal: Future Funding Proposal for FY 23/24

<sup>4</sup> Allocation per Peralta Finance Budget sent to PMO on 10/15/20, with project adjustments to reflect actuals while holding each overall College Measure A Allocation.



# Schedule Overview

Activity	Target Dates TBD
Programming Phase	May 2021 - September 2021
Schematic Design Phase	September - November 2021
Design Development Phase	November 2021 - January 2022
Construction Document Phase	January 2022 - April 2022
Division of the State Architect (DSA) Review	April 2022 - December 2022
Construction Phase	January 2023 - September 2024
Move-in and Closeout	October 2024 - December 2024



# Programming Updates

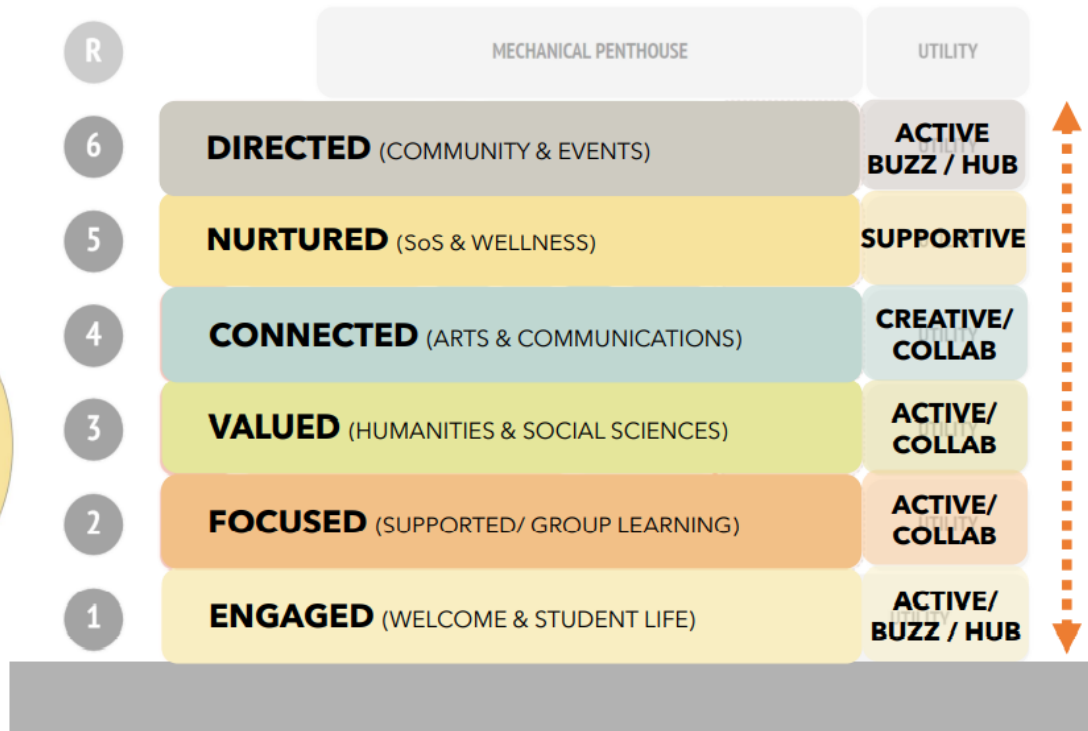
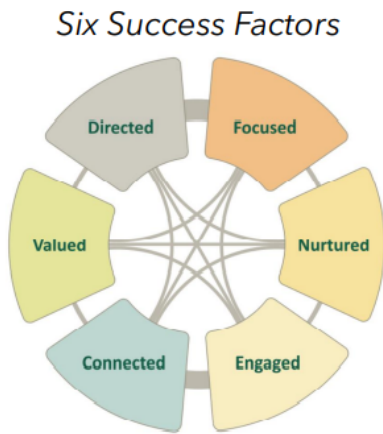


- Welcoming Center Vision
- Corner Entrance
- Bookstore (Remains at Center Street)
- Student Life Offices and Meeting Room (Level 1)
- Faculty Offices (Level 3 and 4)
  - Instructional Dean Office and Meeting Room
- Expanded Student Services on 5<sup>th</sup> Floor to include:
  - UCRC, Society of Scholars (SoS), Umoja, Puente, and CLC
- Mental Wellness and Health Center (combined as Wellness Center)
- Associate Dean – Student Services (Level 5)
- Welcoming Approach to the Administration Suite (Level 6)



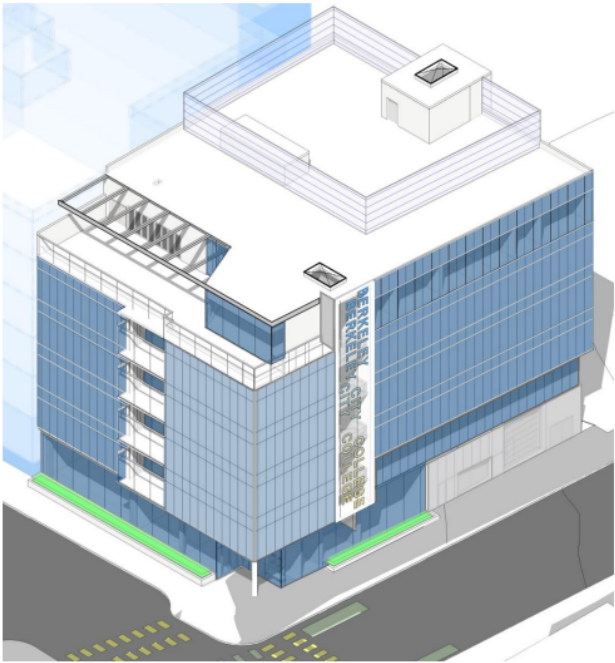
# Stacking and Massing

## Branding & User Experience - by Theme



# Stacking and Massing

## Building Massing



**Southeast**



**Northeast**



# LEVEL 1 - Overall



## A: Entry/ Lobby/ Reception

- Welcoming
- Warm
- Legible

## B: Student Lounge (Gallery)

- Hub
- Active
- Welcoming
- Open

## C: Student Life Suite

- Accessible
- Collaborative
- Active

# LEVEL 2 - Overall



## LRC

- Welcome Desk + soft seating
- 1 private office (1 seat)
- 1 shared office (2 seats)
- 2 open workstations
- 2 8-person group study rooms
- Open seating for 40+
- Writable surfaces
- Storage

## LRC Classroom

- 40 seats
- 1 instructor station

# LEVEL 3 - Overall



## Anthropology, Classrooms & Faculty

- Anthropology & storage
- 2 Large classroom
- 1 smaller classroom
- Faculty office space and open office integrated into teaching floors

# LEVEL 4



## Art, Communications & Faculty

- Art Studio 1 & 2 connected by back hallway and large storage
- Large Classroom
- Communications Classroom
- Communications Lab
- Faculty office space integrated into teaching floors

# LEVEL 5 - Suite Entry



## Shared

- Reception/ Open seating
- Open workstation
- Staff Lounge
- Conference Room (12-seats)
- Storage

## SoS

- 5 private offices

## CLC

- 2 private offices
- 3 open offices

## UCRC

- 2 private offices

## Wellness Center Suite

- Reception Desk
- Waiting (4 seats)
- 2 Private Offices (Health)
- 2 Private Offices (Mental Wellness)
- 1 exam room
- Storage

# LEVEL 6



## A: Administrative Suite

- Welcoming
- Efficient
- Collaborative

## B: Conference Room

- Open
- Connected
- Active

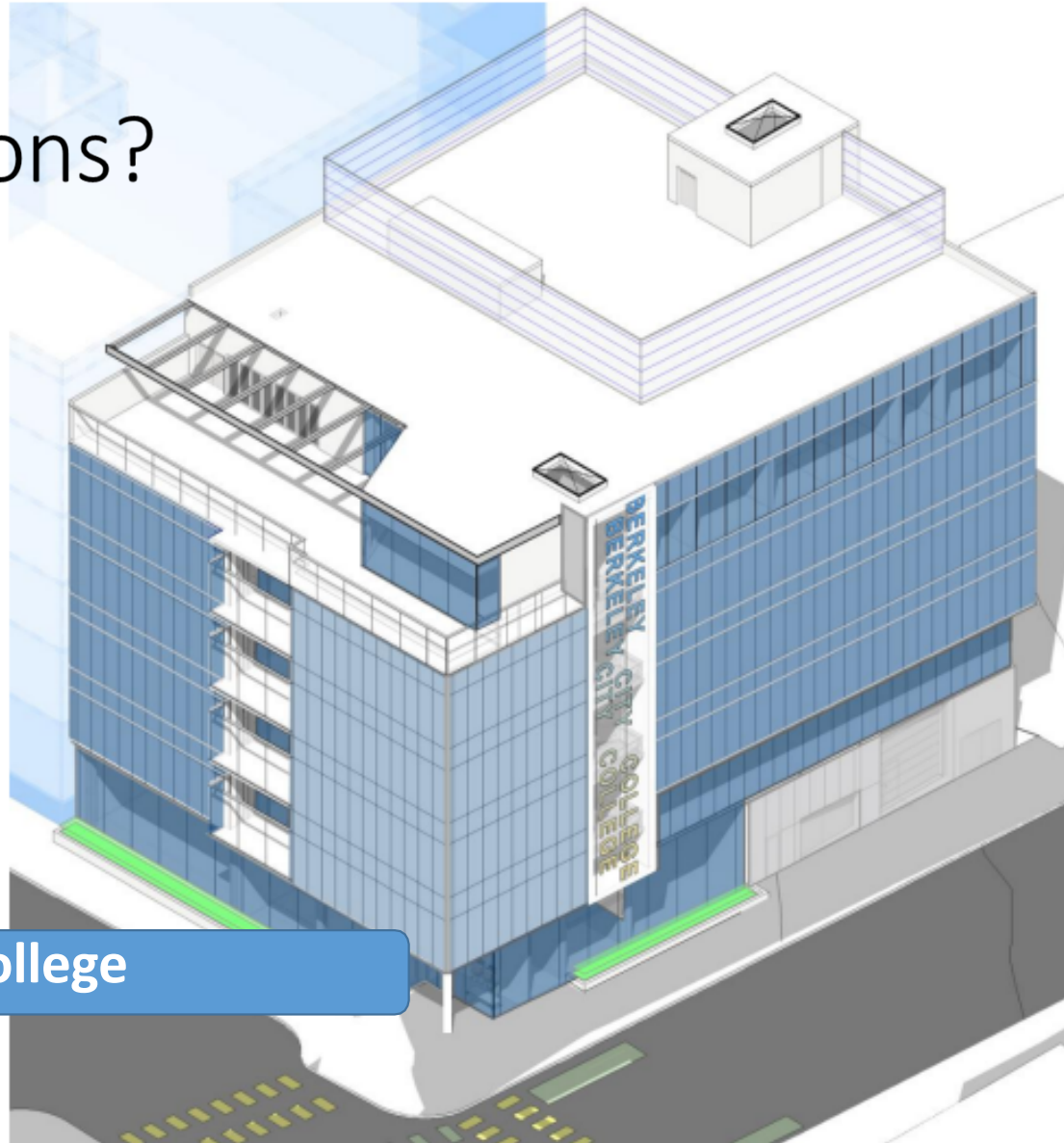
# Next Steps



- Next Building User Group Meeting's
  - Furniture and finishes impression / feedback – upcoming Design Development Phase
  - Students / Community future art opportunities
  - Learning Resource Center
    - LRC and LRC tutors/workers to offer impressions on the current design and layout.
  - Student Services / Student Life & Campus Activities
    - ASBCC and other students to review the space throughout the building and on the first floor and offer impressions on the current design and layout.
  - 5th Floor - UCRC, Umoja, CLC and other student groups to review the current design and layout and provide impressions.
  - Build Peralta Website for follow-up information
  - Informational bulletin boards at Center Street



Questions?



Berkeley City College

Rendering by:  
XL Construction + Ratcliff